

Test Report

No. : CT/2019/41392

Date : 2019/05/09

Page: 1 of 7

SONISON BABY PRODUCTS CO., LTD
1F., NO. 64, LIULU 14TH ST., SHALU DIST., TAICHUNG CITY 433, TAIWAN (R.O.C.)



The following sample(s) was/were submitted and identified by/on behalf of the applicant as :

Sample Submitted By : SONISON BABY PRODUCTS CO., LTD.
Sample Description : SIMBA THUMB SHAPED PACIFIER (0m+, 6m+)
Style/Item No. : P19010/P19011
Sample Material : NO.1:SILICONE, NO.2:ABS, NO.3:PP, NO.4:TRITAN
Country of Origin : TAIWAN
Sample Receiving Date : 2019/04/29
Testing Period : 2019/04/29 TO 2019/05/09

=====
Test Requested : (1) As specified by client, the sample(s) was/were tested with reference to Commission Regulation (EU) No. 10/2011 with amendments and hence Article 3 of European Regulation No. 1935/2004. Please refer to result table for testing item(s).
(2) Please refer to result table for other testing item(s).
Test Result(s) : Please refer to following pages.


Singh Hsiao / Supervisor
Signed for and on behalf of
SGS TAIWAN LTD.
Chemical Laboratory - Taipei



Test Report

No. : CT/2019/41392

Date : 2019/05/09

Page: 2 of 7

SONISON BABY PRODUCTS CO., LTD
1F., NO. 64, LIULU 14TH ST., SHALU DIST., TAICHUNG CITY 433, TAIWAN (R.O.C.)



Test Result(s)

PART NAME No.1 : TRANSPARENT SILICONE PACIFIER (P19011)
PART NAME No.2 : ORANGE PLASTIC (P19011)
PART NAME No.3 : TRANSPARENT PLASTIC COVER (P19011)
PART NAME No.4 : TRANSPARENT PLASTIC (P19011)

(1)

PASS

Test Item(s)	Unit	Method	MDL	Result			Limit
				No.1	No.2	No.3	
Overall migration (3% Acetic Acid) (3rd migration)	mg/dm ²	With reference to EN 1186 (2002). (70°C for 2 hr)	3.0	---	n.d.	n.d.	10
Overall migration (50% Ethanol) (3rd migration)	mg/dm ²		3.0	---	n.d.	n.d.	10
Specific Migration of Heavy Metals							(□ 1)
Barium(Ba) (3rd migration)	mg/kg	With reference to EN 13130-1 (2004). Analysis was performed by ICP-AES. (3% Acetic acid, 70°C, 2 hr)	0.25	---	n.d.	n.d.	1
Cobalt(Co) (3rd migration)	mg/kg		0.01	---	n.d.	n.d.	0.05
Copper(Cu) (3rd migration)	mg/kg		0.25	---	n.d.	n.d.	5
Iron(Fe) (3rd migration)	mg/kg		0.25	---	n.d.	n.d.	48
Lithium(Li) (3rd migration)	mg/kg		0.5	---	n.d.	n.d.	0.6
Manganese(Mn) (3rd migration)	mg/kg		0.25	---	n.d.	n.d.	0.6
Zinc(Zn) (3rd migration)	mg/kg		0.5	---	n.d.	n.d.	5
Aluminum (Al) (3rd migration)	mg/kg		0.25	---	n.d.	n.d.	1
Nickel (Ni) (3rd migration)	mg/kg	With reference to EN 13130-1 (2004). Analysis was performed by ICP-MS. (3% acetic acid, 70°C, 2 hr)	0.01	---	n.d.	n.d.	0.02
Phthalates							
DEHP (Di- (2-ethylhexyl) phthalate) (CAS No.: 117-81-7)	%	With reference to EN 14372 (2004). Analysis was performed by GC/MS.	0.003	---	n.d.	n.d.	0.1 (□ 1)
DBP (Dibutyl phthalate) (CAS No.: 84-74-2)	%		0.003	---	n.d.	n.d.	0.05 (□ 1)
BBP (Butyl Benzyl phthalate) (CAS No.: 85-68-7)	%		0.003	---	n.d.	n.d.	0.1 (□ 1)
DINP (Di-isononyl phthalate) (CAS No.: 28553-12-0; 68515-48-0)	%		0.01	---	n.d.	n.d.	0.1 (□ 1)
DIDP (Di-isodecyl phthalate) (CAS No.: 26761-40-0; 68515-49-1)	%		0.01	---	n.d.	n.d.	0.1 (□ 1)

This document is issued by the Company subject to its General Conditions of Service printed overleaf, available on request or accessible at <http://www.sgs.com/en/Terms-and-Conditions.aspx> and, for electronic format documents, subject to Terms and Conditions for Electronic Documents at <http://www.sgs.com/en/Terms-and-Conditions/Termse-Documents.aspx>. Attention is drawn to the limitation of liability, indemnification and jurisdiction issues defined therein. Any holder of this document is advised that information contained hereon reflects the Company's findings at the time of its intervention only and within the limits of client's instruction, if any. The Company's sole responsibility is to its Client and this document does not exonerate parties to a transaction from exercising all their rights and obligations under the transaction documents. This document cannot be reproduced, except in full, without prior written approval of the Company. Any unauthorized alteration, forgery or falsification of the content or appearance of this document is unlawful and offenders may be prosecuted to the fullest extent of the law. Unless otherwise stated the results shown in this test report refer only to the sample(s) tested.

Test Report

No. : CT/2019/41392

Date : 2019/05/09

Page: 3 of 7

SONISON BABY PRODUCTS CO., LTD

1F., NO. 64, LIULU 14TH ST., SHALU DIST., TAICHUNG CITY 433, TAIWAN (R.O.C.)



(1)

Test Item(s)	Unit	Method	MDL	Result	Limit
				No.4	
Overall migration (3% Acetic Acid) (3rd migration)	mg/dm ²	With reference to EN 1186 (2002). (70°C for 2 hr)	3.0	n.d.	10
Overall migration (50% Ethanol) (3rd migration)	mg/dm ²		3.0	n.d.	10
Phthalates					
DEHP (Di- (2-ethylhexyl) phthalate) (CAS No.: 117-81-7)	%	With reference to EN 14372 (2004). Analysis was performed by GC/MS.	0.003	n.d.	0.1 (□ 1)
DBP (Dibutyl phthalate) (CAS No.: 84-74-2)	%		0.003	n.d.	0.05 (□ 1)
BBP (Butyl Benzyl phthalate) (CAS No.: 85-68-7)	%		0.003	n.d.	0.1 (□ 1)
DINP (Di-isononyl phthalate) (CAS No.: 28553-12-0; 68515-48-0)	%		0.01	n.d.	0.1 (□ 1)
DIDP (Di-isodecyl phthalate) (CAS No.: 26761-40-0; 68515-49-1)	%		0.01	n.d.	0.1 (□ 1)
Specific Migration of Heavy Metals					
Barium(Ba) (3rd migration)	mg/kg	With reference to EN 13130-1 (2004). Analysis was performed by ICP-AES. (3% Acetic acid, 70°C, 2 hr)	0.25	n.d.	1
Cobalt(Co) (3rd migration)	mg/kg		0.01	n.d.	0.05
Copper(Cu) (3rd migration)	mg/kg		0.25	n.d.	5
Iron(Fe) (3rd migration)	mg/kg		0.25	n.d.	48
Lithium(Li) (3rd migration)	mg/kg		0.5	n.d.	0.6
Manganese(Mn) (3rd migration)	mg/kg		0.25	n.d.	0.6
Zinc(Zn) (3rd migration)	mg/kg		0.5	n.d.	5
Aluminum (Al) (3rd migration)	mg/kg		0.25	n.d.	1
Nickel (Ni) (3rd migration)	mg/kg	With reference to EN 13130-1 (2004). Analysis was performed by ICP-MS. (3% acetic acid, 70°C, 2 hr)	0.01	n.d.	0.02

This document is issued by the Company subject to its General Conditions of Service printed overleaf, available on request or accessible at <http://www.sgs.com/en/Terms-and-Conditions.aspx> and, for electronic format documents, subject to Terms and Conditions for Electronic Documents at <http://www.sgs.com/en/Terms-and-Conditions/Termse-Documents.aspx>. Attention is drawn to the limitation of liability, indemnification and jurisdiction issues defined therein. Any holder of this document is advised that information contained hereon reflects the Company's findings at the time of its intervention only and within the limits of client's instruction, if any. The Company's sole responsibility is to its Client and this document does not exonerate parties to a transaction from exercising all their rights and obligations under the transaction documents. This document cannot be reproduced, except in full, without prior written approval of the Company. Any unauthorized alteration, forgery or falsification of the content or appearance of this document is unlawful and offenders may be prosecuted to the fullest extent of the law. Unless otherwise stated the results shown in this test report refer only to the sample(s) tested.

Test Report

No. : CT/2019/41392

Date : 2019/05/09

Page: 4 of 7

SONISON BABY PRODUCTS CO., LTD

1F., NO. 64, LIULU 14TH ST., SHALU DIST., TAICHUNG CITY 433, TAIWAN (R.O.C.)



(2)

Test Item(s)	Unit	Method	MDL	Result			Limit
				No.1	No.2	No.3	
Overall migration (3% Acetic Acid) (3rd migration)	mg/dm ²	With reference to EN 1186 (2002). (70°C for 2 hr)	3.0	n.d.	---	---	-
Overall migration (50% Ethanol) (3rd migration)	mg/dm ²		3.0	n.d.	---	---	-
Phthalates							
DEHP (Di- (2-ethylhexyl) phthalate) (CAS No.: 117-81-7)	%	With reference to EN 14372 (2004). Analysis was performed by GC/MS.	0.003	n.d.	---	---	-
DBP (Dibutyl phthalate) (CAS No.: 84-74-2)	%		0.003	n.d.	---	---	-
BBP (Butyl Benzyl phthalate) (CAS No.: 85-68-7)	%		0.003	n.d.	---	---	-
DINP (Di-isononyl phthalate) (CAS No.: 28553-12-0; 68515-48-0)	%		0.01	n.d.	---	---	-
DIDP (Di-isodecyl phthalate) (CAS No.: 26761-40-0; 68515-49-1)	%		0.01	n.d.	---	---	-
Specific Migration of Heavy Metals							
Barium(Ba) (3rd migration)	mg/kg	With reference to EN 13130-1 (2004). Analysis was performed by ICP-AES. (3% Acetic acid, 70°C, 2 hr)	0.25	n.d.	---	---	-
Cobalt(Co) (3rd migration)	mg/kg		0.01	n.d.	---	---	-
Copper(Cu) (3rd migration)	mg/kg		0.25	n.d.	---	---	-
Iron(Fe) (3rd migration)	mg/kg		0.25	n.d.	---	---	-
Lithium(Li) (3rd migration)	mg/kg		0.5	n.d.	---	---	-
Manganese(Mn) (3rd migration)	mg/kg		0.25	n.d.	---	---	-
Zinc(Zn) (3rd migration)	mg/kg		0.5	n.d.	---	---	-
Aluminum (Al) (3rd migration)	mg/kg	0.25	n.d.	---	---	-	
Nickel (Ni) (3rd migration)	mg/kg	With reference to EN 13130-1 (2004). Analysis was performed by ICP-MS. (3% acetic acid, 70°C, 2 hr)	0.01	n.d.	---	---	-

This document is issued by the Company subject to its General Conditions of Service printed overleaf, available on request or accessible at <http://www.sgs.com/en/Terms-and-Conditions.aspx> and, for electronic format documents, subject to Terms and Conditions for Electronic Documents at <http://www.sgs.com/en/Terms-and-Conditions/Termse-Document.aspx>. Attention is drawn to the limitation of liability, indemnification and jurisdiction issues defined therein. Any holder of this document is advised that information contained hereon reflects the Company's findings at the time of its intervention only and within the limits of client's instruction, if any. The Company's sole responsibility is to its Client and this document does not exonerate parties to a transaction from exercising all their rights and obligations under the transaction documents. This document cannot be reproduced, except in full, without prior written approval of the Company. Any unauthorized alteration, forgery or falsification of the content or appearance of this document is unlawful and offenders may be prosecuted to the fullest extent of the law. Unless otherwise stated the results shown in this test report refer only to the sample(s) tested.

Test Report

No. : CT/2019/41392

Date : 2019/05/09

Page: 5 of 7

SONISON BABY PRODUCTS CO., LTD
1F., NO. 64, LIULU 14TH ST., SHALU DIST., TAICHUNG CITY 433, TAIWAN (R.O.C.)



Remark :

- (1) : Limit is according to Commission Regulation (EU) No 10/2011 of 14 January 2011 with amendments.

Note :

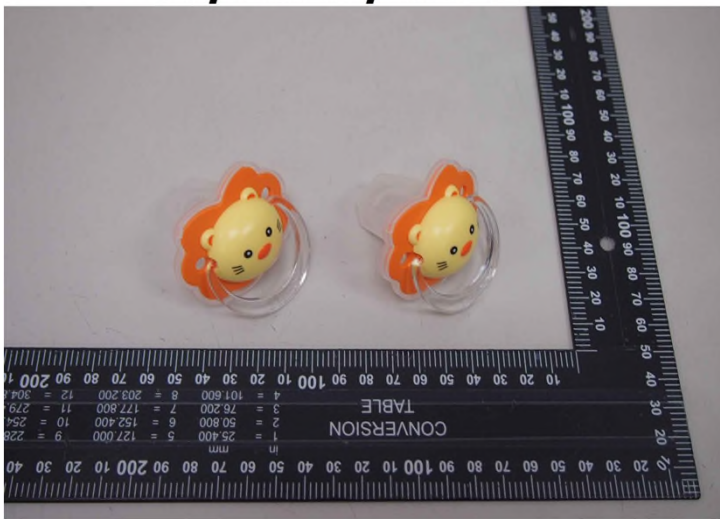
1. mg/kg = ppm ; mg/dm² = milligram per square decimeter ; % =percentage of weight by weight ;
2. MDL = Method Detection Limit
3. n.d. = Not Detected = below MDL
4. - = Not Regulated
5. "---" = Not Conducted
6. °C = degree Celsius
7. Test condition & simulant were specified by client.

SONISON BABY PRODUCTS CO., LTD
1F., NO. 64, LIULU 14TH ST., SHALU DIST., TAICHUNG CITY 433, TAIWAN (R.O.C.)

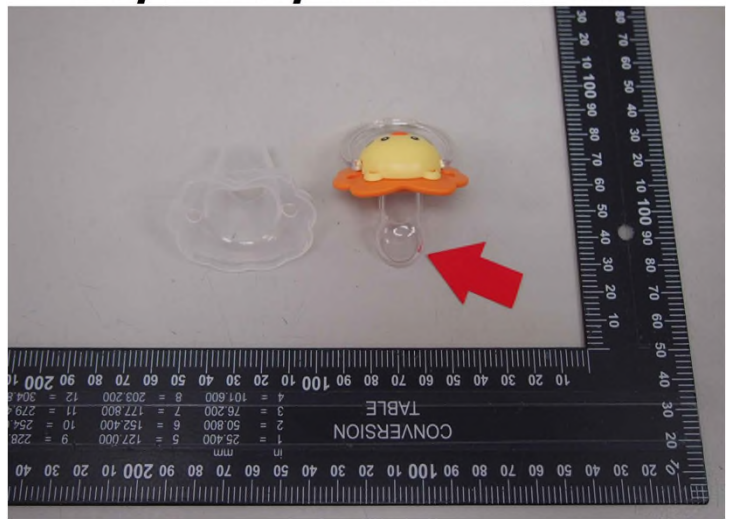


* The tested sample / part is marked by an arrow if it's shown on the photo. *

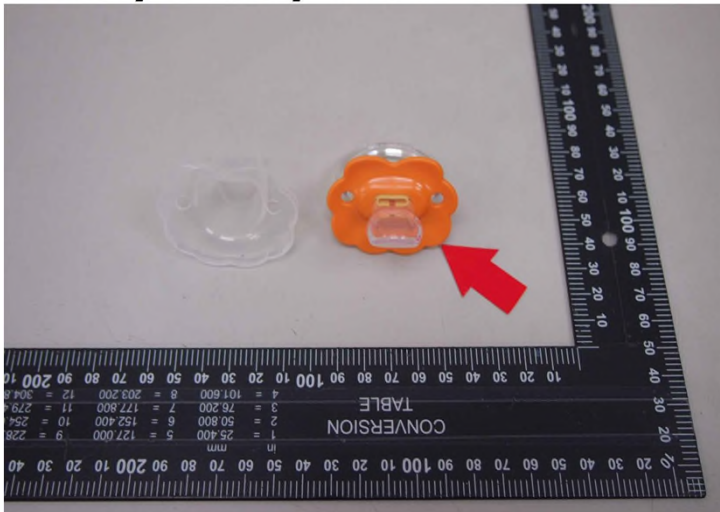
CT/2019/41392



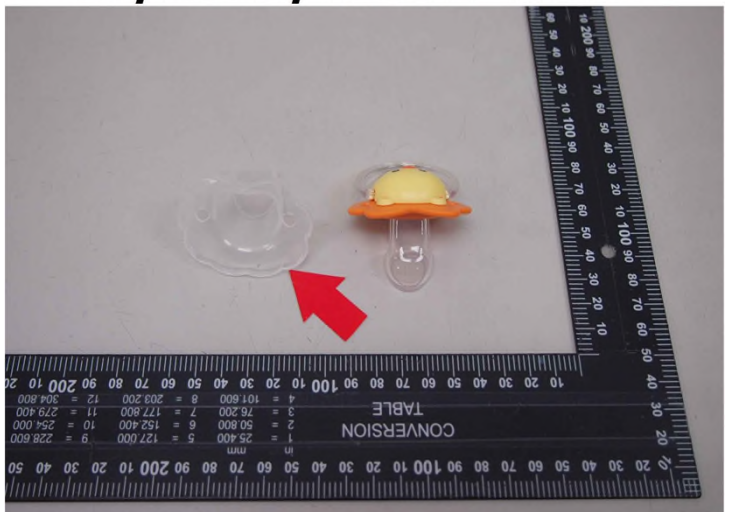
CT/2019/41392 NO.1



CT/2019/41392 NO.2



CT/2019/41392 NO.3



This document is issued by the Company subject to its General Conditions of Service printed overleaf, available on request or accessible at <http://www.sgs.com/en/Terms-and-Conditions.aspx> and, for electronic format documents, subject to Terms and Conditions for Electronic Documents at <http://www.sgs.com/en/Terms-and-Conditions/Termse-Document.aspx>. Attention is drawn to the limitation of liability, indemnification and jurisdiction issues defined therein. Any holder of this document is advised that information contained hereon reflects the Company's findings at the time of its intervention only and within the limits of client's instruction, if any. The Company's sole responsibility is to its Client and this document does not exonerate parties to a transaction from exercising all their rights and obligations under the transaction documents. This document cannot be reproduced, except in full, without prior written approval of the Company. Any unauthorized alteration, forgery or falsification of the content or appearance of this document is unlawful and offenders may be prosecuted to the fullest extent of the law. Unless otherwise stated the results shown in this test report refer only to the sample(s) tested.

SONISON BABY PRODUCTS CO., LTD

1F., NO. 64, LIULU 14TH ST., SHALU DIST., TAICHUNG CITY 433, TAIWAN (R.O.C.)



CT/2019/41392 NO.4



** End of Report **

This document is issued by the Company subject to its General Conditions of Service printed overleaf, available on request or accessible at <http://www.sgs.com/en/Terms-and-Conditions.aspx> and, for electronic format documents, subject to Terms and Conditions for Electronic Documents at <http://www.sgs.com/en/Terms-and-Conditions/Termse-Documents.aspx>. Attention is drawn to the limitation of liability, indemnification and jurisdiction issues defined therein. Any holder of this document is advised that information contained hereon reflects the Company's findings at the time of its intervention only and within the limits of client's instruction, if any. The Company's sole responsibility is to its Client and this document does not exonerate parties to a transaction from exercising all their rights and obligations under the transaction documents. This document cannot be reproduced, except in full, without prior written approval of the Company. Any unauthorized alteration, forgery or falsification of the content or appearance of this document is unlawful and offenders may be prosecuted to the fullest extent of the law. Unless otherwise stated the results shown in this test report refer only to the sample(s) tested.